

# Market Tracker

September 2022

## U.S. Equity Returns

	Sep	YTD	1 Yr	3 Yr
S&P 500	-9.2%	-23.9%	-15.5%	8.2%
Russell 3000	-9.3%	-24.6%	-17.6%	7.7%
NASDAQ	-10.4%	-32.0%	-26.3%	10.6%
Dow Jones	-8.8%	-19.7%	-13.4%	4.4%

## Style Index Returns

Month-to-Date			Year-to-Date			
Value	Core	Growth	Value	Core	Growth	
-8.8%	-9.3%	-9.7%	-17.8%	-24.6%	-30.7%	Large
-9.7%	-9.3%	-8.5%	-20.4%	-24.3%	-31.5%	Mid
-10.2%	-9.6%	-9.0%	-21.1%	-25.1%	-29.3%	Small

## Non-U.S. Equity Returns

	Sep	YTD	1 Yr	3 Yr
ACWI	-9.6%	-25.6%	-20.7%	3.7%
ACWI ex. US	-10.0%	-26.5%	-25.2%	-1.5%
EAFE Index	-9.4%	-27.1%	-25.1%	-1.8%
EAFE Local	-6.2%	-14.5%	-11.1%	2.5%
EAFE Growth	-9.7%	-33.0%	-30.3%	-1.5%
EAFE Value	-9.0%	-21.1%	-20.2%	-2.8%
EAFE Small Cap	-11.5%	-32.1%	-32.1%	-2.2%
Emerging Markets	-11.7%	-27.2%	-28.1%	-2.1%
EM Small Cap	-10.0%	-24.2%	-23.2%	5.5%

## Regional Returns

	Sep	YTD	1 Yr	3 Yr
Europe	-8.7%	-30.6%	-27.0%	-2.7%
Asia ex-Japan	-12.8%	-27.9%	-28.7%	-1.3%
EM Latin America	-3.3%	3.0%	0.2%	-3.4%
U.K	-8.8%	-18.7%	-14.1%	-1.7%
Germany	-8.8%	-37.7%	-37.1%	-7.0%
France	-8.6%	-29.1%	-24.0%	-1.4%
Japan	-10.4%	-26.4%	-29.3%	-2.6%
China	-14.6%	-31.2%	-35.4%	-7.2%
Brazil	-3.3%	11.5%	4.3%	-5.2%
India	-6.4%	-9.7%	-9.9%	11.5%

## Real Estate Returns

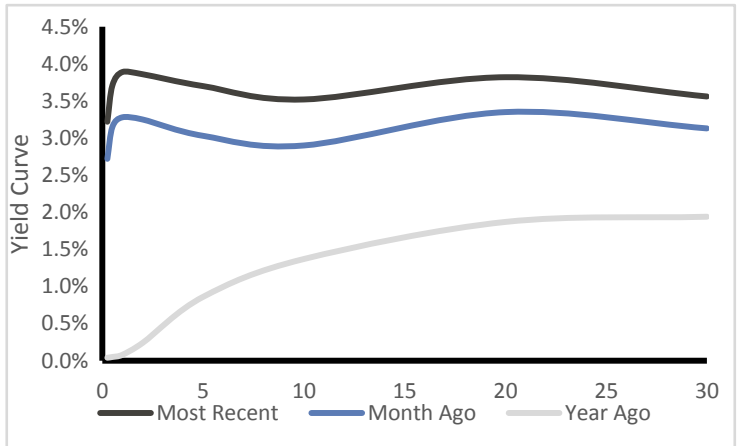
	Qtr	YTD	1 Yr	3 Yr
NCREIF NPI National*	3.2%	8.7%	21.5%	10.2%
FTSE NAREIT	-11.2%	-28.3%	-17.4%	-1.7%

\*Returns as of June 30, 2022.

## Fixed Income Returns

	Sep	YTD	1 Yr	3 Yr
Aggregate	-4.3%	-14.6%	-14.6%	-3.3%
Universal	-4.3%	-14.9%	-14.9%	-3.1%
Government	-3.4%	-12.9%	-12.8%	-3.0%
Treasury	-3.5%	-13.1%	-12.9%	-3.1%
Int. Gov/Credit	-2.7%	-9.6%	-10.1%	-1.6%
Long Gov/Credit	-8.3%	-28.9%	-27.4%	-7.3%
TIPS	-6.6%	-13.6%	-11.6%	0.8%
Municipal 5 Year	-2.8%	-8.1%	-8.0%	-0.9%
High Yield	-4.0%	-14.7%	-14.1%	-0.5%
Bank Loans	-2.2%	-3.3%	-2.6%	2.1%
Global Hedged	-3.2%	-12.1%	-12.1%	-3.1%
EM Debt Hard Currency	-6.4%	-23.9%	-24.3%	-7.2%

## Yield Curve



## Hedge Fund Returns

	Sep	YTD	1 Yr	3 Yr
HFRX Global	-0.9%	-4.5%	-4.4%	2.7%
HFRX Hedged Equity	-1.9%	-4.7%	-2.2%	4.7%
HFRX Event Driven	-0.3%	-5.4%	-7.1%	2.9%
HFRX Macro	3.2%	6.3%	5.4%	3.2%
HFRX Relative Value	-3.0%	-9.8%	-10.1%	-0.1%
CBOE PutWrite	-5.9%	-13.6%	-7.6%	3.9%

## Commodity Returns

	Sep	YTD	1 Yr	3 Yr
GSCI Total	-7.8%	21.8%	23.6%	12.2%
Precious Metals	-0.9%	-11.7%	-7.8%	2.6%
Livestock	-2.4%	-1.0%	0.9%	-6.2%
Industrial Metals	-6.3%	-16.2%	-9.0%	8.2%
Energy	-16.6%	49.8%	30.3%	11.4%
Agriculture	-1.6%	12.8%	19.9%	21.2%
WTI Crude Oil	-10.5%	19.1%	21.6%	2.6%
Gold	-2.9%	-9.3%	-5.7%	2.8%

The information included is provided with permission by Marquette Associates, Inc. ("Marquette"). This material is for informational purposes only and should not be considered investment or legal advice. We believe all sources to be reliable and correct as of the date of this material, but we cannot independently guarantee the accuracy or completeness of any information. Past performance is not a guarantee of future results. All investments involve risk, including loss of principal, and the value of an investment and the income from it can fall as well as rise and you may not get back the amount you originally invested. For a description of each of the indices listed, please contact us at [operations@operoseadvisors.com](mailto:operations@operoseadvisors.com). One cannot invest directly in an index.

## About Operose Advisors

Operose Advisors LLC is a Wisconsin-based investment adviser working in partnership with independent investment consulting firm, Marquette Associates, Inc. Our purpose is to deliver an institutional approach to individuals, families, trusts and closely held businesses with planning, execution, and feedback of investment programs. For more information, please visit [www.operoseadvisors.com](http://www.operoseadvisors.com).

Asset Class Returns			
Category	Index	Category	Index
<b>U.S. Equity</b>		<b>Fixed Income</b>	
S&P 500	S&P 500 Index	Aggregate	Bloomberg Barclays U.S. Aggregate Index
Russell 3000	Russell 3000 Index	Universal	Bloomberg Barclays U.S. Universal Index
NASDAQ	NASDAQ Composite	Government	Bloomberg Barclays U.S. Government Index
Dow Jones	DJ U.S. Composite, Float Adjusted	Treasury	Bloomberg Barclays U.S. Treasury Index
<b>Non-U.S. Equity</b>		Long Gov/Credit	Bloomberg Barclays U.S. Long Gov/Credit Index
ACWI ex. US	MSCI ACWI ex. US	TIPS	Bloomberg Barclays U.S. TIPS Index
EAFE Index	MSCI EAFE Index	Municipal	Bloomberg Barclays U.S. Municipal 5-YR Index
EAFE Local	MSCI EAFE Local	High Yield	Bloomberg Barclays U.S. High Yield Index
EAFE Growth	MSCI EAFE Growth	Bank Loans	Credit Suisse Leveraged Loan Index
EAFE Value	MSCI EAFE Value	Global Hedged	Bloomberg Barclays Global Aggregate Index
EAFE Small Cap	MSCI EAFE Small Cap	EM Debt Hard Currency	JPMorgan EMBI Global Diversified Index
Emerging Markets (EM)	MSCI Emerging Markets	<b>Hedge Fund</b>	
EM Small Cap	MSCI Emerging Markets Small Cap	HFRX Fund Weighted	HFRX Global Hedge Fund Index
<b>Regional</b>		Hedged Equity	HFRX Equity Hedge Index
Europe	MSCI AC Daily TR Net Europe USD	Event Driven	HFRX Event Driven Index
Asia ex-Japan	MSCI Asia ex-Japan	Macro	HFRX Macro CTA Index
EM Latin America	MSCI EM Latin America	Relative Value	HFRX Relative Value Arbitrage Index
U.K.	MSCI U.K.	CBOE PutWrite	CBOE S&P 500 PutWrite Index (Defensive Equity)
<b>Commodity</b>		<b>Commodity</b>	
Germany	MSCI Germany	GSCI Total	S&P GSCI
France	MSCI France	Precious Metals	DJ-UBS Precious Metals
Japan	MSCI Japan	Livestock	DJ-UBS Livestock
China	MSCI China	Industrial Metals	DJ-UBS Industrial Metals
Brazil	MSCI Brazil	Energy	DJ-UBS Energy
India	MSCI India	Agriculture	DJ-UBS Agriculture
<b>Real Estate</b>		WTI Crude Oil	S&P Brent Crude (GSCI)
NCREIF NPI National	NCREIF Property Index	Gold	Bloomberg Gold Subindex
FTSE NAREIT	FTSE NAREIT All Reits Total Return Index		

Style Box Returns	
Category	Index
Large Value	Russell 1000® Value Index
Large Core	Russell 1000® Index
Large Growth	Russell 1000® Growth Index
Mid Value	Russell Midcap® Value Index
Mid Core	Russell Midcap® Index
Mid Growth	Russell Midcap® Growth Index
Small Value	Russell 2000® Value Index
Small Core	Russell 2000® Index
Small Growth	Russell 2000® Growth Index